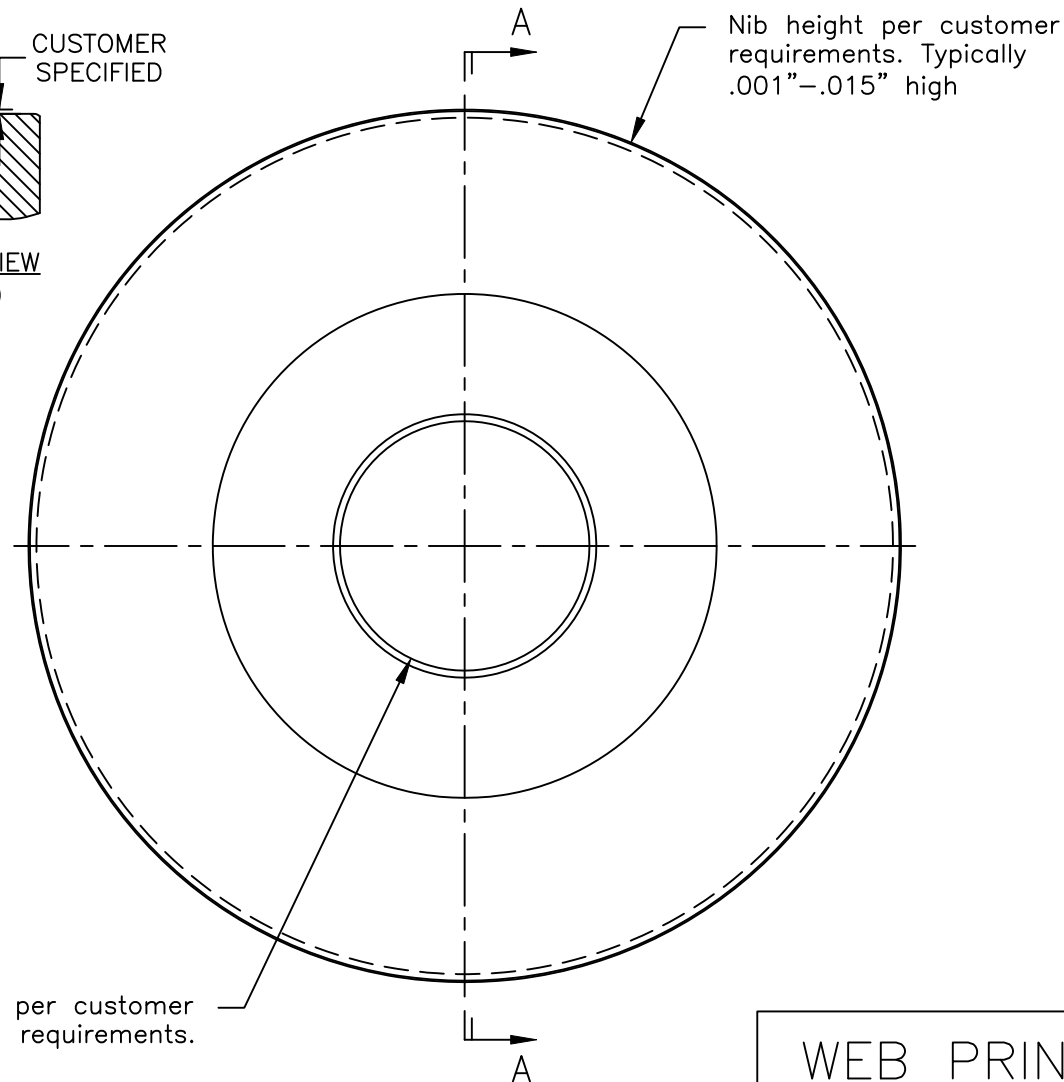
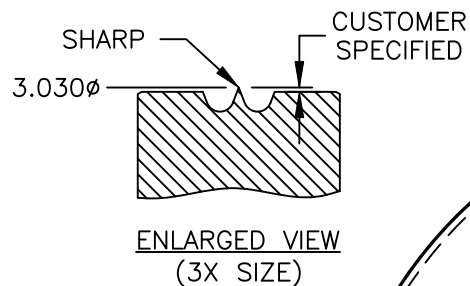


SECTION A-A



WEB PRINT

Circular knives are heat treated, to a hardness specified by customer requirements, up to 63 R/C.

Our circular knives are typically made from 52100 steel, but are also available in other tool steels such as D2 and M2. Other materials are also available for quote.

**PORTAGE KNIFE COMPANY**  
A DIVISION OF PORTAGE MACHINE CONCEPTS, INC. AKRON, OHIO (330) 784-0700

MANUFACTURER OF  
SCORE SLITTERS  
AND PERFORATORS

W300C&P-00

SIZE  
A

DWG NAME:

W300C&P-00.dwg

SCALE:

NONE

DATE:

01/26/2018

DRAWN:

D. MILLER

SHEET:

1 OF 1